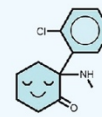


Michigan Progressive Health

Current Prices



Michigan
Progressive
Health

SERVICE	SELF-PAY	INSURANCE**
Integrative ketamine or psychiatry - Office Consult	\$250	\$0*
IVK Prep (55 min.)	\$150	\$0*
Therapy Intake	\$150	\$0*
Medical Clearance for KAP or Existing Pt Psych Eval	\$200	\$0*
Follow-Up Office Visit	\$150	\$0*
IV ketamine treatment	\$500	\$250*
Psychotherapy during IV ketamine (IVKAP) *This fee is in addition to line above	\$250 (\$750 total)	\$100* (\$350* total)
AHK/KAPPP Dosing Session	\$375	\$125*
55-min therapy appointment	\$150	\$0*
Intranasal or oral ketamine session with psychotherapy (OKAP)	\$375	\$225*
Intramuscular ketamine session with psychotherapy (IMKAP)	\$625	\$225*

* These prices do not reflect possible deductibles, co-pays and/or co-insurance.

****IF YOU ARE USING YOUR INSURANCE, YOU MUST HAVE A CREDIT CARD ON FILE.** We will charge your credit card for any patient balance due on your account AFTER insurance has paid their portion to MPH.

A more detailed document explaining how services are billed as well as CPT codes is available.